



International Journal of Innovative Research in Computer and Communication Engineering

(An ISO 3297: 2007 Certified Organization)

Vol. 2, Issue 12, December 2014

Mobility Aware QoS Framework for Mobile Cloud Computing

A.Sheik Ali¹, Dr.K.Baskaran²

Research Scholar, Dept. of CSE., Karpagam University, Coimbatore, Tamilnadu, India¹

Associate Professor, Dept. of EEE., Government College of Technology, Coimbatore, Tamilnadu, India²

ABSTRACT: The usage of mobile phones in current scenarios is in increasing rate. Common people use mobile phones such as iphones, Smart phones, Apple iPad, etc to access internet services. Today's the emerging growth in mobile applications along with cloud computing concepts; Mobile Cloud Computing (MCC) has been introduced as a potential technology for mobile services. MCC is an integration of cloud computing in the mobile environment, which improves the overall performance of the mobile devices such as battery life, storage, etc. MCC still faces a number of challenges in both mobile and computing side, one of which is providing Quality-of-Service (QoS), which means how a service provider can ensure QoS of its cloud services. The provision of QoS in mobile cloud computing is a challenging task. This is because of the dynamic characteristic of mobile networks and limited resources of mobile devices such as bandwidth, delay, packet loss ratio, battery life, storage capacity, computational power, security, etc. To overcome this problem, Mobility Aware QoS Framework for Mobile Cloud Computing (MAQFMCC) and Mobility Aware QoS Analysis Algorithm (MAQAA) are implemented in addition to this an Artificial Neural Network is used for modelling the framework.

KEYWORDS: QoS, Mobile Cloud Computing, quality service, mobile services.

I. INTRODUCTION

Now-a-days, mobile devices such as cell phones, Smart phones, Tablet PCs, etc are rapidly becoming an important part of human life as the most effective and convenient communication tools, which are not restricted by time and place. Mobile users get various services from mobile applications (e.g., iphone apps, Google apps, Android apps etc.) which run on the devices. After the invention of Mobile Cloud Computing (MCC), the mobile devices from remote servers (cloud servers) via wireless networks can access these applications. The rapid progress of mobile computing (MC) [1] becomes a powerful trend in the development of IT technology as well as commerce and industrial fields. However, the mobile devices are facing many challenges in their resources (e.g.: battery life, storage and bandwidth) and communications (e.g.: mobility and security) [2]. The limited resource significantly reduces quality of the services. Mobile Cloud Computing faces a number of challenges both at mobile side and computing side, one of which is Quality-of-Service (QoS) i.e., how a service provider can ensure QoS for its cloud services.

Mobile Cloud Computing (MCC) has been recognized as the next generations computing infrastructure where both the data storage and the data processing happen outside of the mobile device. Mobile cloud applications move the computing power and data storage away from mobile phones and into the cloud. Cloud Services can be accessed through mobile devices such as smart phones, iphones, etc. It brings new types of services and facilities for mobile users to take full advantages of cloud computing.

This paper presents a Mobility Aware QoS Framework for Mobile Cloud Computing (MAQMCC) and Mobility Aware QoS Analysis Algorithm (MAQAA). Section II discusses the related work. Section III explains mobility aware QoS analysis algorithm for MCC. Numerical and simulation results are presented in section IV. Conclusion is presented in Section V.

International Journal of Innovative Research in Computer and Communication Engineering

(An ISO 3297: 2007 Certified Organization)

Vol. 2, Issue 12, December 2014

II. RELATED WORK

The research work on cloud computing falls in various aspects such as cloud computing architecture, cloud services, cloud security, cloud service and research management. Peng et al [3] proposed on QoS aware system for mobile cloud services. The system provides a QoS framework to monitor the status of QoS in each mobile cloud service terminal. The system also considers other factors influences on different cloud service modes with regard to QoS, e.g., availability, stability, etc.

Some of existing work focuses on QoS aware web service. Lodi et al [4] proposed a middle-ware architecture for enabling service level agreement (SLA)- driven clustering of QoS- aware application servers. Some work focus on QoS architecture design for cloud computing, Wang et al [5] proposed on adaptive QoS management framework for VOD (Video on Demand) cloud service centres. Ye et al [6] proposed a framework for QoS and power management in a service cloud environment with mobile devices. Some work focus on mechanisms for QoS management in cloud computing. Li [7] proposed on adaptive management of virtualized resources in cloud computing using feedback control. Xiao [8] proposed a reputation based QoS provisioning in cloud computing via Dirichlet multinomial model.

The existing work comprehensively and flexibly supports using both QoS properties and QoS service modes as key parameters for run time QoS adaptive assurance. Yan [9] proposed an adaptive trust control model to evaluate, establish, specify and ensure the trust relationships among system entities. All the existing work only concentrate on static mobile cloud computing framework, where all the nodes considers as static nodes.

III. MOBILITY AWARE QOS ANALYSIS ALGORITHM

In this section the system architecture of the framework, its modelling and the proposed algorithm has been discussed in detail.

A. System Architecture:

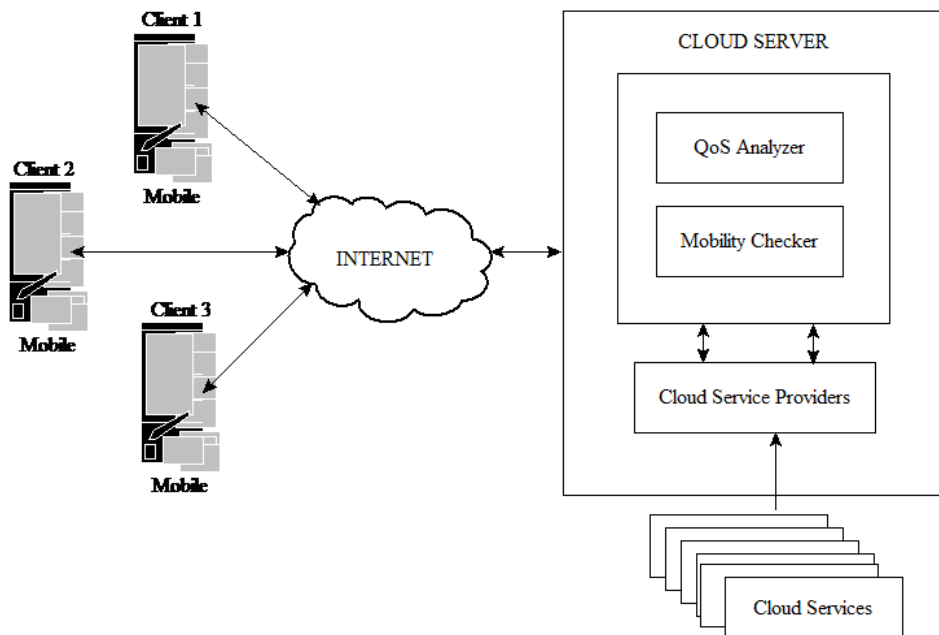


Fig. 1. Mobility Aware QoS Framework Architecture

Fig.1 shows a Mobility Aware QoS Framework Architecture. The system architecture consists of three layers, The Mobile Phones (Clients), QoS Manager and Cloud Service Provider. In a mobile device, a QoS agent monitors the status of the mobile device at running time, such as, the transmission rate, percentage of memory and power consumption, packet loss ratio, etc. The QoS status will report to QoS manager in cloud side. The QoS manager

International Journal of Innovative Research in Computer and Communication Engineering

(An ISO 3297: 2007 Certified Organization)

Vol. 2, Issue 12, December 2014

calculates the QoS requirement of the client and analyses the requirement against the cloud service modes running on cloud side using Mobility Aware QoS Analysis Algorithm. It also thoroughly monitors the mobility of each service modes and coverage of client with each cloud service provider using mobility checker. As per the client's requirements, the QoS manager dynamically adjusts the resources to meet QoS requirements of each cloud services.

B. Framework Modeling:

An Artificial Neural Network (ANN) has been used to modelling the framework. The ANN model includes three layers of nodes such as input layer, hidden layer and output layer. The input layer consists of set of cloud service modes (SM_j). The hidden layer represents the training algorithm. We have proposed a training algorithm called Mobility Aware QoS Analysis Algorithm (MAQAA) to analyses and select quality service mode according to the client's requirement. The output layer represents QoS value of each service modes (SM_j). Fig.2 shows the framework modelling based on ANN.

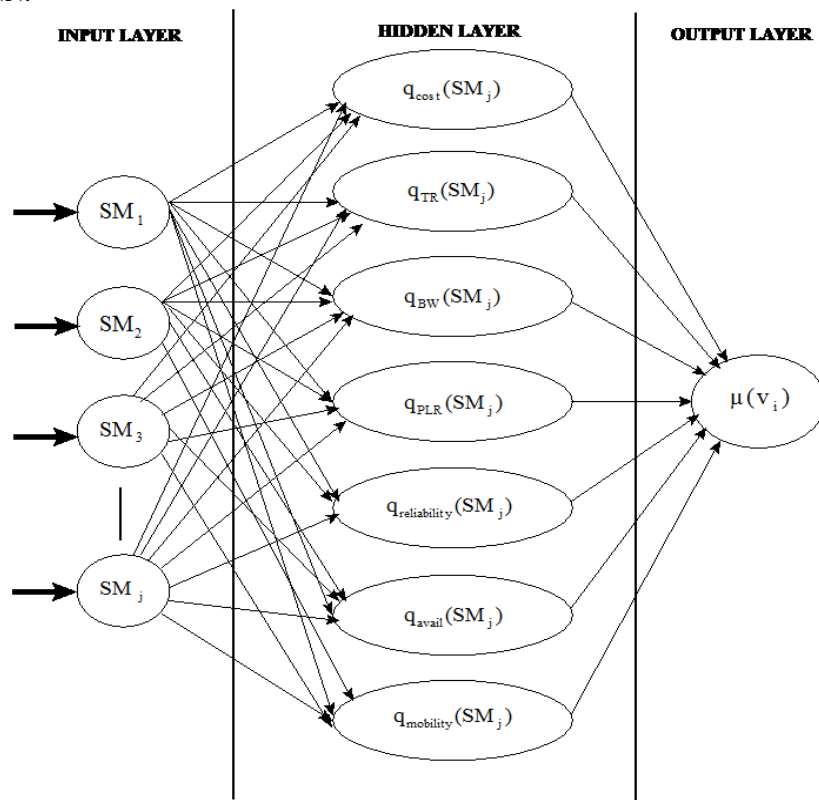


Fig. 2. Framework Modeling based on ANN

C. Mobility Aware QoS Analysis Algorithm (MAQAA):

Aim of the proposed algorithm is to analyse the cloud service modes (SM_j) provided by various cloud service providers based of various QoS parameters and select the QoS guaranteed service modes for delivering services to its clients. The algorithm uses seven QoS parameters such as transmission rate, packet loss ratio, cost, bandwidth, reliability, availability and mobility to analyze the client's requirement for providing quality service. The varies QoS parameters are discussed below.

Mobility Aware QoS Analysis Algorithm calculates QoS value [$\mu(SM_j)$] for each cloud service modes (SM_j) based on the seven QoS parameter. For calculating the QoS value, the algorithm defines quality vector for service mode SM_j that is defined as,

$$q(SM_j) = \{ q_{TR}(SM_j), q_{PLR}(SM_j), q_{BW}(SM_j), q_{Cost}(SM_j), q_{reliability}(SM_j), q_{avail}(SM_j), q_{mobility}(SM_j) \} \quad \text{e.q (1)}$$

The MAQAA uses fuzzy multi-attribute approach [10][11] for selecting QoS guaranteed service mode SM_j. Mobility Aware QoS Analysis Algorithm is presented below,

International Journal of Innovative Research in Computer and Communication Engineering

(An ISO 3297: 2007 Certified Organization)

Vol. 2, Issue 12, December 2014

MAQAA Algorithm

Step 1: Obtain the QoS parameters such as transmission rate q_{TR} , Packet Loss Ratio q_{PLR} , Bandwidth q_{BW} , Cost q_{cost} , Reliability $q_{reliability}$, and Availability q_{avail} for all service modes SM_j .

Step 2: Detect the fading effect of signal strength and hand off of the mobile device to measure the mobility of the each service modes SM_j .

Step 3: Calculate the distance between client and each service modes SM_j based on the mobility.

Step 4: Construct a quality vector $q(SM_j)$ using the values obtained from step 1-3 for each QoS parameters for each service modes SM_j .

$$q(SM_j) = \{ q_{TR}(SM_j), q_{PLR}(SM_j), q_{BW}(SM_j), q_{Cost}(SM_j), q_{reliability}(SM_j), q_{avail}(SM_j), q_{mobility}(SM_j) \}$$

Step 5: Construct a quality matrix Q using the service modes SM_j .

$$Q_{n \times 7} = \begin{bmatrix} q_{11} & q_{12} & q_{13} & q_{14} & q_{15} & q_{16} & q_{17} \\ q_{21} & q_{22} & q_{23} & q_{24} & q_{25} & q_{26} & q_{27} \\ q_{31} & q_{32} & q_{33} & q_{34} & q_{35} & q_{36} & q_{37} \\ \vdots & \vdots & \vdots & \vdots & \vdots & \vdots & \vdots \\ q_{n1} & q_{n2} & q_{n3} & q_{n4} & q_{n5} & q_{n6} & q_{n7} \end{bmatrix}$$

Step 6: Scale the quality matrix to make the QoS parameter value in an common representation using the formula,

$$Q'_{n \times 7} = \begin{bmatrix} v_{11} & v_{12} & v_{13} & v_{14} & v_{15} & v_{16} & v_{17} \\ v_{21} & v_{22} & v_{23} & v_{24} & v_{25} & v_{26} & v_{27} \\ v_{31} & v_{32} & v_{33} & v_{34} & v_{35} & v_{36} & v_{37} \\ \vdots & \vdots & \vdots & \vdots & \vdots & \vdots & \vdots \\ v_{n1} & v_{n2} & v_{n3} & v_{n4} & v_{n5} & v_{n6} & v_{n7} \end{bmatrix}$$

$$v_{ij} = 1 - \frac{q_{ij}}{\max(q_{ij}) + \min(q_{ij})}, 1 \leq i \leq n \quad \text{e.q (2)}$$

For negative QoS parameters such as cost, packet loss ratio, mobility.

$$v_{ij} = \frac{q_{ij}}{\max(q_{ij}) + \min(q_{ij})}, 1 \leq i \leq n \quad \text{e.q. (3)}$$

For positive QoS parameters bandwidth, transmission rate.

Step 7: Compute the quality vector value using quality matrix for the positive (g) and negative(b) QoS parameters of each service modes SM_j . Quality vector of the positive QoS parameters denoted by 'g(SM_j)' in $Q_{n \times 7}$ is defined as

$$g(SM_j) = \{ g_1(SM_1), g_2(SM_2), g_3(SM_3), g_4(SM_4), g_5(SM_5), g_6(SM_6), g_7(SM_7), g_8(SM_8) \} \\ = \{ \max(v_{11}), \max(v_{12}), \max(v_{13}), \max(v_{14}), \max(v_{15}), \max(v_{16}), \max(v_{17}), \max(v_{18}) \}$$

Quality vector for the negative QoS parameters denoted by 'b(SM_j)' in $Q_{n \times 7}$ is defined as,

$$b(SM_j) = \{ b_1(SM_1), b_2(SM_2), b_3(SM_3), b_4(SM_4), b_5(SM_5), b_6(SM_6), b_7(SM_7), b_8(SM_8) \} \\ = \{ \min(v_{11}), \min(v_{12}), \min(v_{13}), \min(v_{14}), \min(v_{15}), \min(v_{16}), \min(v_{17}), \min(v_{18}) \}$$

Step 8: Compute the weighted Euclidean distance for both positive and negative QoS parameters of each service modes SM_j using the formula, Weighted Euclidean distance between service modes (SM_j) and the negative QoS parameters 'b(SM_j)' is defined as $d_{neg}(SM_j)$.

International Journal of Innovative Research in Computer and Communication Engineering

(An ISO 3297: 2007 Certified Organization)

Vol. 2, Issue 12, December 2014

$$d_{neg}(SM_j) = \sqrt{\sum_{j=1}^7 w_j (v_{ij} - b(SM_j))^2}, 1 \leq i \leq n$$

e.q. (4)

Weighted Euclidean distance between service modes (SM_j) and the positive QoS parameter is defined as $d_{pos}(SM_j)$.

$$d_{pos}(SM_j) = \sqrt{\sum_{j=1}^7 w_j (g(SM_j) - v_{ij})^2}, 1 \leq i \leq n$$

e.q. (5)

Step 9: Calculate the QoS value of each service modes SM_j, using the formula, The QoS value of service mode denoted by $\mu(v_i)$ is defined as,

$$\mu(SM_j) = \frac{1}{1 + \left[\frac{d_{pos}(SM_j)}{d_{neg}(SM_j)} \right]^2}, 1 \leq j \leq n$$

e.q. (6)

Where, n is the number of service modes (SM_j), $\sum_{j=1}^7 w_j$ and w_j represents the weight of the jth quality criterion

Step 10: Choose the service modes SM_j as the QoS guaranteed service mode which has maximum QoS value.
 $QoS_{\mu} = \max(\mu(SM_j))$ e.q (7)

IV. RESULT ANALYSIS

In this section we discussed the numerical and simulation result analysis of the proposed algorithm.

A. Numerical Results:

We tested the proposed algorithm with 8 service modes and 7 QoS parameters such as Transmission Rate (TR), Packet Loss Ratio (PLR), Bandwidth (BW), Cost, Reliability, Availability and Mobility. We take the data in Table 1 as an example to illustrate the algorithm numerically in detail.

The proposed algorithm MAQAA has mathematically worked out with the sample data given in Table 1. In this example the unit of QoS parameters for all service modes is same. The weighted vector used in this example is $w = (0.3, 0.1, 0.1, 0.1, 0.1, 0.1, 0.2)$. The quality vector Q has constructed using Table 1. Using Step 6 of the algorithm stated in section III, the quality vector has scaled for a common representation which simplifies the mathematical process. The scaled quality matrix has given in Fig.3.

Table 1. Sample Data

QoS Parameters	Service Modes (SM _j)							
	SM ₁	SM ₂	SM ₃	SM ₄	SM ₅	SM ₆	SM ₇	SM ₈
TR	10	15	12	20	15	10	10	15
PLR	30	20	25	10	15	20	25	30
BW	50	60	50	100	70	100	20	25
Cost	60	62	64	40	63	54	56	58
Reliability	90	85	92	96	91	92	86	88
Availability	85	82	90	94	88	86	85	88
Mobility	20	40	25	5	30	35	22	10

International Journal of Innovative Research in Computer and Communication Engineering

(An ISO 3297: 2007 Certified Organization)

Vol. 2, Issue 12, December 2014

According to the definitions of positive and negative QoS parameters discussed in the algorithm, quality vector g and b are calculated and the values are obtained given below.

$$Q'(SM_j) = \begin{bmatrix} 0.47 & 0.46 & 0.44 & 0.56 & 0.45 & 0.53 & 0.51 & 0.49 \\ 0.33 & 0.50 & 0.40 & 0.67 & 0.50 & 0.33 & 0.33 & 0.50 \\ 0.42 & 0.50 & 0.42 & 0.83 & 0.58 & 0.83 & 0.17 & 0.21 \\ 0.25 & 0.50 & 0.38 & 0.75 & 0.63 & 0.50 & 0.38 & 0.25 \\ 0.50 & 0.47 & 0.51 & 0.53 & 0.51 & 0.51 & 0.48 & 0.49 \\ 0.48 & 0.47 & 0.51 & 0.53 & 0.50 & 0.49 & 0.48 & 0.5 \\ 0.56 & 0.11 & 0.44 & 0.89 & 0.33 & 0.22 & 0.51 & 0.78 \end{bmatrix}$$

Fig. 3. Scaled quality matrix

$$g(SM_j) = \{ 0.56, 0.5, 0.51, 0.89, 0.63, 0.83, 0.51, 0.78 \}$$

$$b(SM_j) = \{ 0.25, 0.11, 0.38, 0.53, 0.33, 0.22, 0.17, 0.2 \}$$

According to the definition of $\mu(SM_j)$ the QoS value for each service modes are calculated. For our example the QoS values are,

$$\mu(SM_j) = \{ 0.48, 0.47, 0.56, 0.77, 0.17, 0.38, 0.73, 0.75 \}.$$

Based on the proposed algorithm the service mode which has maximum QoS value is selected as a QoS guaranteed service modes. So the mobility aware QoS framework selects the service mode SM_4 as QoS guaranteed service mode and let the service mode SM_4 to deliver the services to the clients.

B. Simulation Results:

We simulated our proposed algorithm MAQAA using NS2 simulator with an arbitrary wireless topology having 20 nodes and 40 edges. The purpose of simulation is to compare the performance of our algorithm against the other service mode selection approaches such as Random Approach (RA) and No-MCC. The following graphs illustrate the performance analysis of the proposed algorithm MAQAA and other approaches.

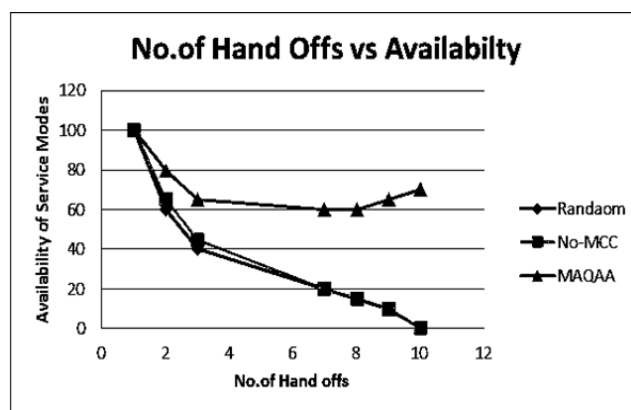


Fig.4. No. of Hand offs Vs Availability of Service modes

Fig.4 describes the comparison of MAQAA algorithm with other approaches such as no-MCC and Random based on No. of Hand offs and Availability of Service Modes. Fig.4 shows that the MAQAA algorithm has higher rate of availability of service modes than other approaches even the number of mobile hand offs increases. Next the MAQAA has compared with No-MCC and Random Approach based on Service Utilization percentage. It is illustrated in Fig.5.

International Journal of Innovative Research in Computer and Communication Engineering

(An ISO 3297: 2007 Certified Organization)

Vol. 2, Issue 12, December 2014

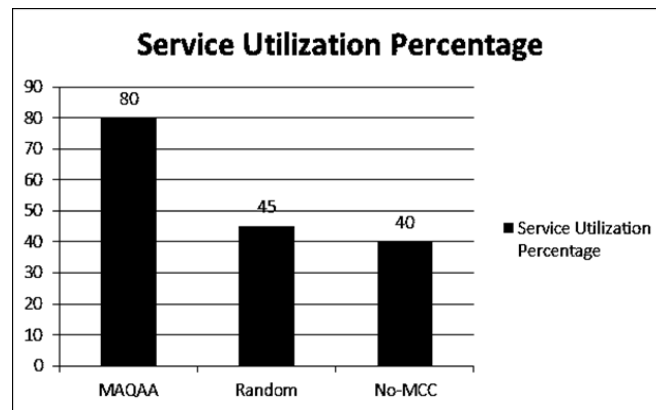


Fig.5. Service Utilization Percentage

Fig.5 shows that the service utilization level of the MAQAA algorithm is better than other two approaches, since MAQAA algorithm consider the mobility and other QoS parameters of each service modes and choose the QoS guaranteed service mode. So the cloud service accessed by clients can be highly reliable and its leads higher utilization of service that other approaches.

V. CONCLUSION AND FUTURE WORK

This paper has proposed a Mobility Aware QoS Framework for mobile Cloud Computing and proposed a Mobility Aware QoS Analysis Algorithm. This algorithm analysed the QoS guaranteed service modes out of 'n' number of services modes provided by various cloud service providers and allow the selected provider to provide cloud services to its clients. The framework used seven QoS parameters for analysing the service modes including mobility. This way the proposed algorithm leads the other algorithm by considering the mobility factor of each service modes and choose the QoS guaranteed services modes. The results show that the proposed algorithm increases the availability and utilization of cloud services compare to other similar service selection approaches.

REFERENCES

1. M. Armbrust, "Above the Clouds: A Berkeley View of Cloud", University of California, Berkeley, February 2009.
2. S. Perez. Why Cloud Computing is the Future of Mobile, "http://www.readwriteweb.com/archives/why_cloud_computing_is_the_future_of_mobile.php", August 2009.
3. Peng Zhang and Zheng Yan, "A QoS-aware system for mobile cloud computing", IEEE International Conference on Cloud Computing and Intelligence Systems (CCIS), Pp: 518 - 522, Sept 2011.
4. G. Lodi, F. Panzieri, D. Rossi, E. Turrini, "SLA-Driven Clustering of QoS-Aware Application Servers", IEEE Transactions on Software Engineering, VOL. 33, NO. 3, pp. 186-197, March 2007.
5. X. Wang, Z. Du, X. Liu, H. Xie, X. Jia, "An adaptive QoS management framework for VoD cloud service centers. 2010", International Conference on Computer Application and System Modeling (ICCSM), Volume: 1, pp. 527-532, 2010.
6. Y. Ye, N. Jain, L. Xia, S. Joshi, I-L. Yen, F. Bastani, K. L. Cureton, M. K. Bowler, "A Framework for QoS and Power Management in a Service Cloud Environment with Mobile Devices" Fifth IEEE International Symposium on Service Oriented System Engineering (SOSE), pp. 236 - 243, 2010.
7. Q. Li, Q. Hao, L. Xiao, Z. Li, "Adaptive Management of Virtualized Resources in Cloud Computing Using Feedback Control", 1st International Conference on Information Science and Engineering (ICISE), pp. 99 - 102, 2009.
8. Y. Xiao, C. Lin, Y. Jiang, X. Chu, X. Shen, "Reputation-Based QoS Provisioning in Cloud Computing via Dirichlet Multinomial Model", IEEE International Conference on Communications (ICC), pp. 1 - 5, 2010.
9. Z. Yan, C. Prehofer, "Autonomic Trust Management for a Component Based Software System", IEEE Transactions on Dependable and Secure Computing, doi. 10.1109/TDSC.2010.47, pp. 810 - 823, September 2010.
10. Chen S J, "Fuzzy multiple attribute decision making: methods and applications", Berlin: Springer-Verlag, ISBN: 978-3-540-54998-7, vol.375, Pages 289-486, 1992.
11. Chen Shouyu, "Theory of fuzzy selection for multistage and multi objective decision making system", The Journal of Fuzzy mathematics, volume 2, pp. 163-174. 1994.



ISSN(Online): 2320-9801
ISSN (Print): 2320-9798

International Journal of Innovative Research in Computer and Communication Engineering

(An ISO 3297: 2007 Certified Organization)

Vol. 2, Issue 12, December 2014

BIOGRAPHY



A. Sheik ali is a Research Scholar in the Computer Science and Engineering Department, Karpagam University, Coimbatore, Tamil Nadu, India. He received Master of Engineering (ME) degree in 2009 from Sri Ramakrishna Engineering College, Affiliated to Anna University, Coimbatore, Tamil Nadu, India. His research interests are Computer Networks, Cloud Computing, Mobile Cloud Computing, etc.



Dr. K. Baskaran is a member of the IEEE and ISTE, obtained his PhD degree from Anna University, Chennai, Tamil Nadu, India. He is having 18 years of teaching experience and got several awards including Best System Paper Award from IETE in 2010. Currently he is working as an Associate Professor in Department of Electrical and Electronics Engineering at Government College of Technology, Coimbatore, Tamil Nadu, India. His research interests include MANETs, Wireless sensor networks, Cloud Computing, Wireless Body Area Networks and Network security.