

# **Ergonomics Analysis in the Scarfing Process by OWAS, NIOSH and Nordic Body Map's Method at Slab Steel Plant's Division**

Nasir Widha Setyanto<sup>1</sup>, Remba Yanuar Efranto<sup>2</sup>, Rio Prasetyo Lukodono<sup>3</sup>, Aisah Dirawidya<sup>4</sup>

Department of Industrial Engineering, University of Brawijaya, Malang, Indonesia<sup>1,2,3,4</sup>

**ABSTRACT:** Musculoskeletal Disorders (MSDs) are conditions that cause pain and impair normal activities. MSDs is a kind of degenerative disease. Based on the observation this condition was identified at Scarfing process in Slab Steel Company. In that company Scarfing process is process conducted to find defect product and fix it. The operator should move Scarfing Machine manually. Based on Nordic Body Map questionnaire operators felt pain at upper neck, left wrist, right wrist, lower neck, waist, right elbow, and leg. For decreasing MSDs risk this research gave body posture recommendation and machine movement method. Body posture recommendation was generated based on Ovako Work Posture Analysis System (OWAS). Meanwhile, Machine movement method was generated based on NIOSH.

**KEYWORDS:** Ergonomics, MSDs, NIOSH, Nordic Body Map, OWAS

## **I. INTRODUCTION**

Musculoskeletal Disorder (MSDs) or a skeletal muscle disorder is an injury in muscles, nerves, tendons, ligaments, joints, cartilage, and discus intervertebralis. Muscles injuries can be in forms of muscle strain, inflammation, and degeneration. Meanwhile, bone injuries may be forms of bruising, micro fractures, fractures, or twisted bones. MSDs occurred in two ways, which are a constant fatigue and exhaustion caused by the frequency of long duration of muscular effort, and sudden injury caused by severe activities or unpredictable movements [1]. Anticipating MSDs becomes crucial in order to reduce workers' exhaustion so that their health will be guaranteed, and also the company's productivity could be increased, but the discussion will be limited to reduction of MSDs in workers.

In the finishing slab processes of steel, there are some processes such as cross transfer process, cooling bed, and scarfing process, the process which is done manually is scarfing [2]. During scarfing process, the operator is working with the position of standing and lifting scarfing machine with the weight up to 12 kilograms. Scarfing operator is a shift worker, who has working time up to 8 hours, each operator and shift has their own target completion [3]. Their working condition which requires them to bear on the position of head and back bending and also lifting the heavy machine during working time indicate that the working facilitates are not ergonomic.

Regarding this issue, this journal conducts an analysis of working posture by using Nordic Body Map method, OWAS and NIOSH. Nordic Body Map is a method done by analysis body map directed to each body part. Through Nordic Body Map we can see the parts of muscle which are undergoing complaints from the level of uncomfortable feeling (a bit painful) to the high level of pain [4]. OWAS is a method of working posture analysis by undertaking evaluation on working posture that causing musculoskeletal injury [5]. Meanwhile, NIOSH is an analysis method which is worthwhile for determining Recommended Weight Limit (RWL) and Lifting Index (LI).

## **II. RESEARCH POSITION**

A research entitled "Analisis sikap kerja japekerja manual material handling UD Tetap Semangat dengan Metode OWAS (An analysis on manual material handling workers' working posture in UD Tetap Semangat by using OWAS method)" conducted by Triyono (2006) was undertaken to identify and analyze working posture in order to know the present condition of working posture. The result of this research is the activities done in printing department and also in shipping department are still risky. The workers' posture is bending and twisting when doing umbrellas organizing

# International Journal of Innovative Research in Science, Engineering and Technology

(An ISO 3297: 2007 Certified Organization)

Vol. 4, Issue 3, March 2015

activity. The improvement is done by making the posture of back and hips is better in line and feet posture rests on both feet in the straight position [4]. The identification and improvement can be done by using OWAS method.

A research entitled “Analisis Manual Material Handling Menggunakan Niosh Equation (An Analysis on Manual Material Handling Using Niosh Equation)” by Etika Muslimah (2006), the people being researched were the workers who lift rice bags, whereas the research location was warehouse “BULOG” Sub Depot Logistic Area III Surakarta Pergudangan Beras 305 Grogol, Sukoharjo. The research was conducted by using calculation method of energy consumption and heart rate, RWL in NIOSH and Lifting Index (LI). Based on the calculation of energy consumption, it is seen that the energy consumed is included in light workload. Then, according to the calculation of Recommended Weight Limit (RWL), it is seen that lifting load in Pergudangan Beras Bulog is too heavy because the value of the calculation of RWL is between 8.87-10.7 kilograms, beyond under the actual lifting load value which is 40 kilograms and the result of the LI calculation causes spinal cord injuries since the value  $LI > 1$  [5].

Nataya Charoonsri R, Dian Mardi S, and Fransiskus Alexander conducted a research “Identifikasi Risiko Ergonomi pada Stasiun Perakitan Daun Sirip Diffuser di PT. X” in 2008. This research is about identifying ergonomic risks in work station X Company. This identification is conducted since work station is classified as a light job but it is repeated and done in a long time. The result of this research is that work station 2 is indicated; especially in the process of assembling has the highest REBA value which is 11 and it is classified as a high level of risk. Meanwhile, based on Nordic Body Map questionnaire it is shown that the problems are mostly occurred in waist, the top of the neck, the right shoulder, and the top of the right and left arms. Based on the analysis on working method, it is found that cycle time 138.78 seconds with the imbalance between right and left arms. The left arm is in the idle or static state for 89.72 seconds [6].

In this research, the method to identify whether there is any complaint toward MSDs in workers is conducted by giving Nordic Body Map questionnaires. The result of the questionnaire will show which workers’ body parts that are undergoing a complaint of MSDs [7]. To reduce the complaint of MSDs, the scarfing workers should improve for better posture, but since their posture is formed due to the working facilitates, the additional suggestion is not only for working posture but also working design as the supporter of the safe working posture. The suggestion for improvement in terms of working posture is based on the calculation of OWAS, whereas for working design is based on NIOSH method.

### III. RESEARCH METHOD

Field study or survey introduction is conducted to know the present condition in the field. Field study is done by spreading Nordic Body Map questionnaire and interviewing some workers in each shift. Literature review stage is done to study science theory about problem solving found in the next stage. This stage also can be done whenever during research process if the researcher needs another theory to support this research. The research questions are arranged after understanding the problems occurring and then formulate them according to the facts taken place in the field. The researcher uses two methods in the data collection. They are library research and field research. The stages of data collection using field research method are observation, interview, and documentation. Data collection needed in this research is complaints data based on nbm, operator’s working posture photos, the angles and the body size of workers during scarfing process, and scarfing machine data. In this part, the analysis of collected data in the previous step is done. Workers’ complaint data is as research basis. The operator’s working posture photos are analyzed by using OWAS method, and then the angle and the body size of workers are analyzed by using NIOSH. The results of posture data and working design analysis generate an ergonomic suggestion for improvement. The suggestion is that the calculation using OWAS and NIOSH should be verified. After all of the hypotheses based on analysis result are made, the conclusion of the research can be generated.

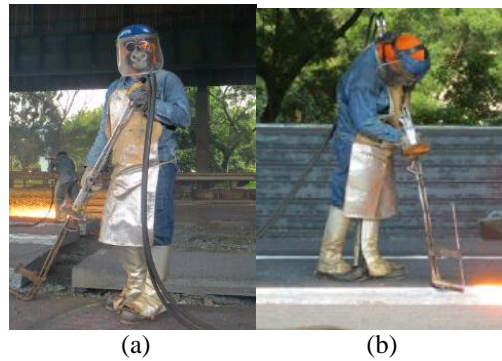
### IV. RESULTS AND DISCUSSION

Scarfig process is a process of identifying and omitting any defect on the slab. The solution of the various slabs is based on the defect. The kinds of defect on the common slab is called scarfing code. The picture of scarfing workers can be seen in Figure 1.

## International Journal of Innovative Research in Science, Engineering and Technology

(An ISO 3297: 2007 Certified Organization)

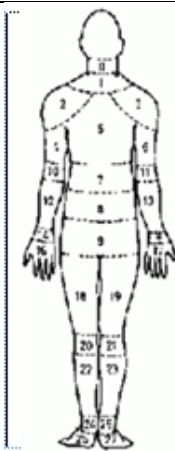
Vol. 4, Issue 3, March 2015



**Figure 1.** (a)Position origin scarfing process (b)Position destination scarfing process

The first process is identification in which body parts of the workers frequently undergoing the complaints. This process uses Nordic Body Map questionnaire method which is spread among the workers in each working shift in the scarfing department. From Nordic Body Map can be seen several complaints frequently felt by scarfing operator. The result of Nordic Body Map can be seen in Table 1. Nordic Body Map is filled based on the level of complaints as seen in Table 2.

**Table 1.** Nordic result Body Map

Musculoskeletal	Skoring				NBM	Musculoskeletal	Skoring				
	1	2	3	4			1	2	3	4	
0. Upper Neck				√		1. Lower Neck				√	
2. Left Shoulder			√			3. Right Shoulder			√		
4. Upper Left Arm			√			5. Back				√	
6. Upper Right Arm			√			7. Waist				√	
8. Hip			√			9. Bottom		√			
10. Left Elbow			√			11. Right Elbow				√	
12. Lower Left Arm	√					13. Lower Right Arm	√				
14. Left Wrist				√		15. Right Wrist				√	
16. Left Hand			√			17. Right hand			√		
18. Left Thight		√				19. Right Thight		√			
20. Left Knee		√				21. Right Knee		√			
22. Left Leg			√			23. Right Leg			√		
24. Left Angkle		√				25. Right Angkle		√			
26. Left Foot		√				27. Right Foot		√			
<b>Sum Score Right</b>				<b>40</b>			<b>Sum Score Left</b>				<b>40</b>
<b>Individual Sum Score MSDs = 35 + 40 = 75</b>											

**Table 2.** High Request Nordic Body Map

Degree of Pain	Skor	Degree of Pain	Skor
No pain	1	Pain	3
Rather pain	2	Very Pain	4

**Table 3.** Total score Nordic Body Map

Skor	Individual Sum Skor	Degree of Risk	Improvement
1	28 – 49	Low	Doesn't need improvement
2	50 – 70	Medium	Maybe need improvement
3	71 – 91	High	Need Improvement
4	92 - 112	Very High	Need Improvement as soon as Possible

## International Journal of Innovative Research in Science, Engineering and Technology

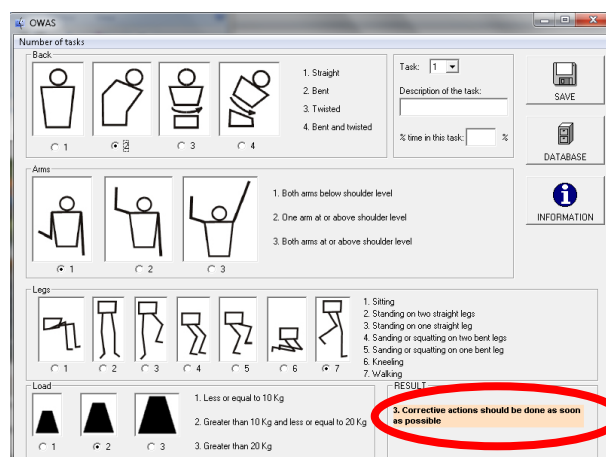
(An ISO 3297: 2007 Certified Organization)

Vol. 4, Issue 3, March 2015

Based on the result of nbm, the total score of individual with MSDs is obtained which is 75 meaning that immediate action as Table 3 is needed. It is because the scarfing workers' posture is bending for a long time and walk slowly during scarfing so that the exhaustion mostly occurred in the top of neck, left wrist, right wrist, nape, back, waist, right elbow, and calf. The recommended improvement is in form of administration improvement where scarfer in training should be based on recommended working posture and condition so that the scarfer who passes the training about 6-12 months can surely have safe working posture.

### 4.1 OWAS

To improve working posture and follow up the result of Nordic Body Map questionnaire, the calculation of OWAS is conducted. The calculation of working posture is done by using ErgoFellow software. The OWAS score filling is based on Figure 1, such as the bending worker's back is scored 2. The result of OWAS calculation can be seen in Figure 2.

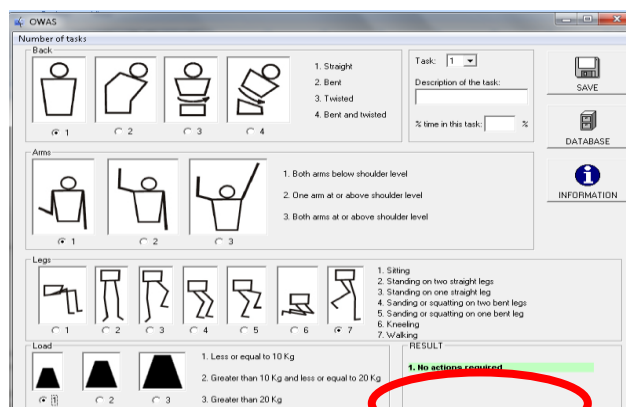


**Figure 2.** Counting result OWAS

The results above show the scores of scarfing activity including the job which the improvement needs to be done immediately. The recommended improvement is by reducing the aspects which have influence in the calculation, such as:

1. The operator's body posture is straighten when scarfing
2. The weight of scarfing machine is minimized

If the posture improvement is applied and counted again, the recommended improvement showing straight working position and machine weight is minimized make the job does not need any improvement as seen in the following Figure 3.



**Figure 3.** The count OWAS after improve

## International Journal of Innovative Research in Science, Engineering and Technology

(An ISO 3297: 2007 Certified Organization)

Vol. 4, Issue 3, March 2015

### 4.2 NIOSH

The calculation of NIOSH is based on one of OWAS results which stated that it needs to reduce the workers' lifting load. The NIOSH size is similar to Figure 1 origin position and destination scarfing. The data of origin position and destination scarfing can be seen in Table 4 below.

**Table 4.** Data of MMH Early

Object Weight		Hand Location				Vertical distance	Assymetry Angle		Frequency rate	Duration	Coupling
		Origin		Destination			Origin	Destin			
L (avg)	L (max)	H	V	H	V	D	A	A	F	hours	C
10kg	11kg	51,5	70	35	91	21	0°	45°	0,5	4	Fair

From the data, the calculation of NIOSH before improvement can be done as follows:

$$\begin{aligned}
 LC &= 23 \\
 HM &= \frac{25}{H} \\
 &= \frac{25}{35} = 0,71 \\
 VM &= 1 - (0.003|V - 75|) \\
 &= 1 - (0.003|91 - 75|) = 0.82 \\
 DM &= (0.82 + \frac{4.5}{D}) \\
 &= (0.82 + \frac{4.5}{21}) = 1.03 \\
 AM &= [1 - (0.0032 \times A)] \\
 &= [1 - (0.0032 \times 45)] \\
 &= 0.86 \\
 FM &= 0.81 \\
 CM &= 0.95
 \end{aligned}$$

**Table 5.** The count of RWL

LC	HM	VM	DM	AM	CM	FM	RWL	LI
23	0,71	0,82	1,03	0,86	0,95	0,81	9,14	1,20

$$\begin{aligned}
 RWL_{Destination} &= LC \times HM \times VM \times DM \times AM \times FM \times CM \\
 &= 23 \times 0.71 \times 0.82 \times 1.03 \times 0.86 \times 0.81 \times 0.95 \\
 &= 9.14
 \end{aligned}$$

$$\begin{aligned}
 LI_{Destination} &= \frac{Heavy}{RWL} \\
 &= \frac{11}{9.14} = 1.20
 \end{aligned}$$

Table 5 is the result of NIOSH calculation. Since LI > 1, the lifting load activities is in the state of danger, the improvement toward the working condition is absolutely needed. The changeable working condition is reducing the distance of the object or handling with the workers' body central, but since the blaner produces heat, if it is too close with the workers, so the handling distance with the blaner edge is extended. Working condition change can also be done by reducing vertical distance between the blaner and the workers. The reduction of worker's asymmetry can also be done to reduce injury risk undergone by scarfing. Moreover, it can reduce vertical distance change gap and it can influence to reduce injury impact for workers. The improvement on coupling such as adding rubber and flexible in order to make the coupling used more comfortable because the blaner is used in a long duration and the flexible addition is done so that the height of the coupling can be adapted with the operator's body height. If the proposed improvement is counted again, then it will change as Table 6.

## International Journal of Innovative Research in Science, Engineering and Technology

(An ISO 3297: 2007 Certified Organization)

Vol. 4, Issue 3, March 2015

**Table 6.** Data of MMH After Improve

Object Weight		Hand Location				Vertical distance	Assymetry Angle		Frequency rate	Duration	Coupling
		Origin		Destination			Origin	Destin			
L (avg)	L (max)	H	V	H	V	D	A	A	F	hours	C
10kg	11kg	51,5	80	25	91	11	0°	15°	0,5	4	Good

The count of NIOSH after improvements:

$$\begin{aligned}
 LC &= 23 \\
 HM &= \frac{25}{H} = \frac{25}{25} \\
 &= 1 \\
 VM &= 1 - (0.003|V - 75|) = 1 - (0.003|91 - 75|) \\
 &= 0.82 \\
 DM &= (0.82 + \frac{4.5}{D}) = (0.82 + \frac{4.5}{11}) \\
 &= 1.23 \\
 AM &= [1 - (0.0032 \times A)] = [1 - (0.0032 \times 15)] \\
 &= 0.95 \\
 FM &= 0.81 \\
 CM &= 1
 \end{aligned}$$

**Table 7.** The count of RWL After Improve

LC	HM	VM	DM	AM	CM	FM	RWL	LI
23	1	0,82	1,23	0,95	1	0,81	17,81	0,62

$$\begin{aligned}
 RWL_{Destination} &= LC \times HM \times VM \times DM \times AM \times FM \times CM \\
 &= 23 \times 0.82 \times 0.82 \times 1.23 \times 0.95 \times 0.81 \times 1 \\
 &= 17.81
 \end{aligned}$$

$$LI_{Destination} = \frac{\text{Berat beban}}{RWL} = \frac{11}{17.81} = 0.62$$

Table 7 is the result of NOISH calculation after breeding, whereas Table 8 represents the change appeared. From the working improvement, by changing the distance  $V_{Origin}$  to 80 so the Vertical Distance becomes 11,  $H_{Destination}$  to 25, and  $A_{Destination}$  to  $15^\circ$  produces that  $LI > 1$ , so the lifting load activity is in the safe condition. Therefore, the working condition as system 8 is recommended to be done by scarfing operator in order to reduce MSDs in the process

**Table 8.** Changes distance MMH

	Object Weight		Hand Location				Vertical Distance	Assymetry Angle		Frequency rate	Duration	Coupling
			Origin		Destination			Origin	Destination			
	Avg	Max	H	V	H	V			Lift/min	Hours		
Before	10kg	11kg	51,5	70	35	91	21	$0^0$	$45^0$	0,5	4	Fair
After	10kg	11kg	51,5	80	25	91	11	$0^0$	$15^0$	0,5	4	Good

### 4.3. Suggestions for Improvements.

Based on the whole research results and the improvement done in working system of lifting load activity, the recommendations are formulated as follows:

1. The scarfer is recommended to be in upright position when scarfing
2. The blaner weight lifted is minimized
3. The recommended distance to do scarfing is 25 cm from coupling body central.
4. The recommended distance when scarfing is 91 cm from coupling with slab stepped by scarfer.

## International Journal of Innovative Research in Science, Engineering and Technology

(An ISO 3297: 2007 Certified Organization)

Vol. 4, Issue 3, March 2015

5. The angle of the worker's asymmetry is not more than 15°
6. Then the coupling should be covered by rubber because the workers use it for a long time and it will make it more comfortable.
7. The coupling should be flexible, so that it can be moved up and down in accordance to the workers' body weight.
8. The training is done based on the improved working posture.


The result of improvement recommendation as Table 9 is expected to be able to reduce MSDs in the result of Nordic Body Map calculation.

### V. CONCLUSION

According to the research conducted, it can be concluded that:

- 1) The evaluation of scarfing operator working position in Slab Steel Plant (SSP) division are:
  - a) Using OWAS method shows that the improvement of scarfing workers' body posture needs to be done immediately and as soon as possible since the scarfer's body postures are bending back, hands down and lift 11 kg blanner while walking.
  - b) The evaluation of NIOSH method shows that the lift is in the dangerous category since the vertical and horizontal distance of scarfer mass central with the blanner or the distance gap before and after between scarfer mass central and slab is maximized.
  - c) Based on Nordic Body Map, the complaints undergone by scarfer are occurred in the top of the neck, nape, back, waist, shoulder, elbow, wrist, and calf. The three methods stated that the scarfing workers' body position and posture are dangerous position and it needs to be improved immediately and as soon as possible.


**Table 9.** Results of the Recapitulation assessment process Scarfing

	OWAS Body Posture Assessment		Injury identification with RWL and LI used NIOSH Method	Pain Assessment form Nordic Body Map	Explanation	Recommendation Of Work System
Before	Back = bent Arm = both arm below shoulder level Legs = walking Load = greater than 10 kg and less or equal to 20 kg Result = 3. Need Improvement as soon as possible		RWL (Recommended Weight Limit) <sub>Destination</sub> = 1,20 LI(Lifting Index) = 1,20 > 1 (Danger category)	Pain at: 1. Upper neck 2. Lower neck 3. Back 4. Hip 5. Shoulder 6. Elbow 7. Wrist 8. Leg	Need improvement because wrong body posture cause injury in musculoskeletal disorder	Improvement recommendation: 1. Back in straight position 2. Reduce in weight of blanner 3. Reduce coupling distance with body 4. Increase coupling distance with slab 5. Reduce degree of asymmetry of work 6. Add rubber in coupling 7. Make coupling position flexible
Improve ment Recommendation	1. Back in straight position 2. Reduce in weight of blanner		1. Reduce coupling distance with body 2. Increase coupling distance with slab 3. Reduce degree of asymmetry of work 4. Add rubber in coupling 5. Make coupling position flexible	Training use body posture after improvement		
After	Back = straight Arm = both arm below shoulder level		RWL (Recommended Weight	Expectation from improvement		

## International Journal of Innovative Research in Science, Engineering and Technology

(An ISO 3297: 2007 Certified Organization)

Vol. 4, Issue 3, March 2015

	OWAS Body Posture Assessment		Injury identification with RWL and LI used NIOSH Method	Pain Assessment form Nordic Body Map	Explanation	Recommendation Of Work System
	Legs = walking Load = less or equal 10 kg Result = 1. Doesn't need Improvement		Limit) <sub>Destination</sub> = 17,81 LI(Lifting Index) = 0,62 < 1 (Danger category)	is reduce pain in every segment		

- 2) The working system improvement is based on three methods such as OWAS, NIOSH, and Nordic Body Map:
- a) By using OWAS method, scarfer's back who are doing scarfing is suggested to be upright and the blaner weight should be reduced (less than 10 kg)
  - b) Improvement recommendation by using NIOSH is that recommended distance when scarfing is 25 cm from the body central to the coupling, 91 from the coupling to the slab stepped by the scarfer, the angle of the worker's asymmetry is not more than 15°, and the coupling should be covered by rubber since the workers use it for a long time so that it will be more comfortable. Besides, the coupling is made very flexible so that the coupling can be moved up and down just like the workers' body height.
  - c) Based on Nordic Body Map, the recommended improvement is administration improvement which the training done by scarfer is based on the recommended working postures.

### REFERENCES

- [1] Sutrisni, Dian, "PencegahanPengendalianGangguanOtotRangka", 2005
- [2] Anon, "Krakatau Steel" <http://www.krakatausteel.com/>, 2014
- [3] Anon, "TugasSoftskill Krakatau Steel", <http://restyresty.files.wordpress.com/2011/12/tugas-softskill-pt-krakatau-steel.pdf>, 2014
- [4] Triyono, "Analisisikapkerjapekerja manual material handling UD TetapTemangatdenganmetode OWAS", TeknikIndustriFakultasTeknikUniversitasSebelasMaret, Surakarta, 2006
- [5] MuslimahEtika., Pratiwi Indah., Rafsanjani Fariza, "Analisis Manual Material Handling MenggunakanNiosh Equation,JurusanTeknikIndustriUniversitasMuhammadiyah. Surakarta, 2006
- [6] CharoonsriNataya., Mardi Dian., Alexander Fransiskus, "IdentifikasiRisikoErgonomiPadaStasiunPerakitanDaunSirip Diffuser Di PT X". Industrial Engineering Department Trisakti University, Jakarta Barat, 2008
- [7] Anon, "DHHS (NIOSH) Publication, Musculoskeletal Disorders and Workplace Factors : A Critical Review of Epidemiologic Evidence for Work-Related Musculoskeletal Disorders of the Neck, Upper Extremity, and Low Back", U.S. Department of Health And Human Services, 1997